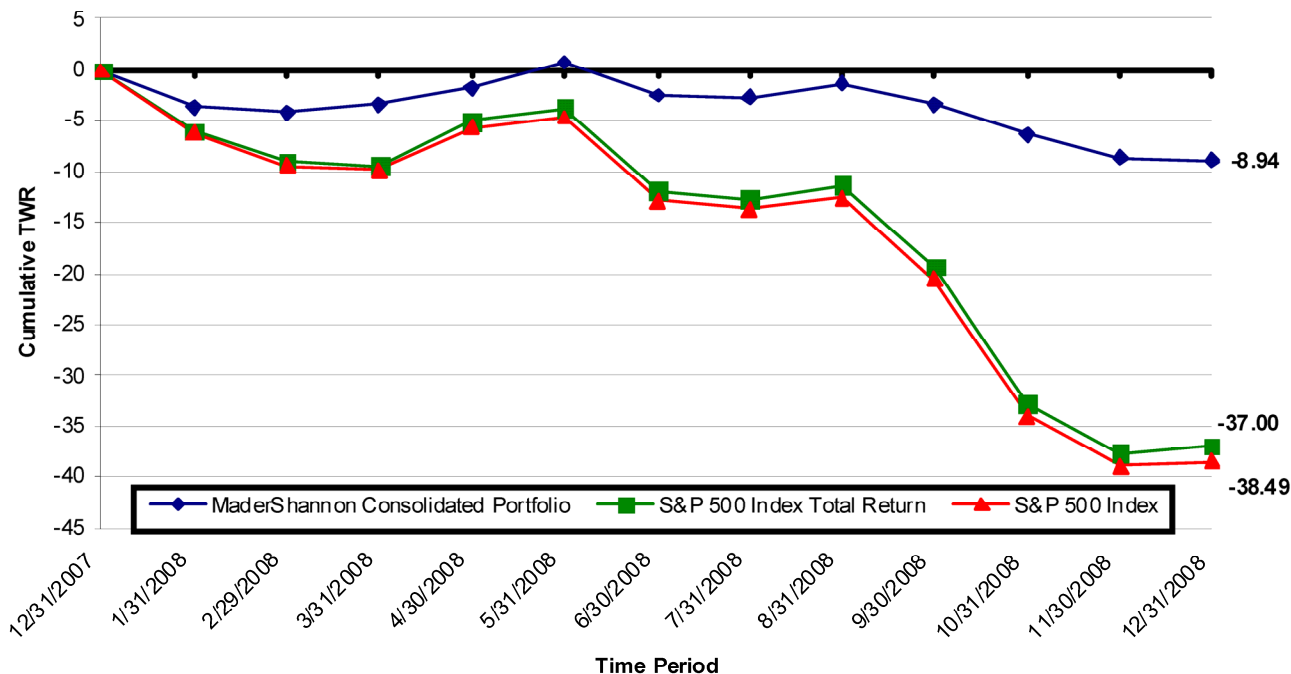




**Mader & Shannon Wealth Management**  
**2008 Consolidated Performance History (12/31/2007 thru 12/31/2008)**  
**Net of All Management Fees and Transaction Charges**  
**All Accounts Under Management as of 12/31/2008 (\$59,045,271.00)**

Toll free 800-838-9988  
 (816)751-0585  
 Fax (816)751-0586  
 www.madershannon.com

**MaderShannon** – Consolidated Portfolio, George Shannon Portfolio Manager  
**S&P500TR** – Standard & Poor's 500 index including the reinvestment of dividends  
**S&P\_500** – Standard & Poor's index containing stocks of 500 Large-Cap corporations



**General Risks:** Past performance does not guarantee future results. Investing in any market involves risk including the loss of principal. All investment strategies have the potential for profit or loss. Changes in investment strategies, contributions or withdrawals may materially alter the performance and results of your portfolio. There is no guarantee that a client's investment objectives will be met. Some clients included in this Consolidated Performance Group may have experienced significantly different performance results. Different types of investments involve varying degrees of risk, and there can be no assurance that any specific investment will either be suitable or profitable for a client's investment portfolio. Economic factors, market conditions, and investment strategies will affect the performance of any portfolio and there are no assurances that it will match or outperform any particular benchmark. This information is provided for informational purposes only and should not be deemed as a recommendation to buy or sell a specific security. **Expenses:** Net performance results are presented after all trading costs and after deducting a management fee where applicable in accordance with the firm's fee schedule set forth in Part II of the firm's ADV. The consolidated performance is calculated after the reinvestment of capital gains, dividends, and income therefore it may be more appropriate to compare to 'Total Return' results from a comparable index. **Performance:** Performance is reported as the time-weighted rate of return. The time-weighted rate of return performance calculation is the industry standard for measuring performance and represents the only practical method for comparing manager results over time. Additional information about time-weighted rate of return can be found at <http://www.investopedia.com/terms/t/time-weightedror.asp>. The Portfolio Manager has remained the same throughout the entire performance period. From 12/31/04 to 3/30/05 the principals of the firm were registered with First American Financial Advisors, a state registered investment advisor firm. Mader Financial Advisors, Inc. was approved as a state registered investment advisor firm on 3/30/05. The firm has been registered with the SEC since 1/12/07, and changed its name to Mader & Shannon Wealth Management, Inc. on 11/29/07. **Market Comparisons:** The Consolidated Performance Chart does not necessarily reflect a group of investments similar to the indices shown for comparison purposes, as it may contain such investments as Foreign Securities, Bonds, Real Estate Investment Trusts, and/or Cash among others. The indices have not been selected to represent appropriate benchmarks to compare the Consolidated Performance, but rather are disclosed to allow for comparison of the Consolidated Performance to that of well-known and widely recognized indices. The volatility of the indices may be materially different from that of the firm's performance. During the period shown the Consolidated Portfolio may have used securities to accomplish certain investment objectives for specific clients that it no longer uses. Market conditions, along with individual client objectives, dictate the securities that make up the performance chart. Those conditions change over time and may have varied significantly throughout the period presented here. Historical performance results for investment indexes and/or categories, generally do not reflect the deduction of transaction and/or custodial charges or the deduction of an investment-management fee, the incurrence of which would have the effect of decreasing historical performance results. **Consolidated Portfolio:** Client accounts that make up this consolidated chart may not necessarily share the same investment strategy. Charts referencing 'All Accounts' include accounts managed on a fully discretionary basis and partially discretionary accounts which may hold positions not managed by Mader & Shannon. The Chart also contains accounts that are income oriented and accounts that may have different tax considerations (i.e. qualified and non-qualified accounts). Some accounts managed on a long-term, non-discretionary basis are not included in this Chart. The non-discretionary accounts not included consist of 3 accounts totaling \$254,046 in assets as of 12/31/2008. Mader & Shannon Wealth Management currently manages some client assets in the form of Variable Life sub-accounts. The performance of those accounts is not included in this performance chart. Those assets consist of 3 separate policies totaling \$317,728.16 in Cash Value as of 12/31/2007.

Mader & Shannon Wealth Management is registered as an investment advisor with the SEC. Mader & Shannon only transacts business in states where it is properly registered, or is excluded or exempted from registration requirements. For more information about our firm please ask for a copy of our ADV Part II.